

IMAGE PERFORMANCE

LCD Panel	Active Matrix TFT with LED Backlight
Image Size (W x H)	27.4 x 15.4 inches (698 x 393 mm)
Viewing Area (Diagonal)	31.5 inches (800 mm)
Pixel Pitch	0.364 mm
Resolution (H x V)	1920 x 1080 (16:9 Aspect Ratio, Full HD)
Luminance	350 cd/m ² (Typical), 300 cd/m ² (BT.709)
Color Calibration	NDS Color Correction Technology (CCT)
Contrast Ratio (Typical)	3000:1 (Native, Not Dynamic)
Number of Colors	1.08 Billion Colors (10-Bit)
Color Gamut	BT.709 or SMPTE-C
Viewing Angle	178° (Horizontal & Vertical)
Response Time	8 ms (Typical)

GENERAL

Input Power Requirements	24 Volts DC (19.0 Volts Minimum)
Power Consumption	60 Watts (Max)
Dimensions	29.6 x 18.5 x 3.4 inches (751 x 470 x 86 mm)
Weight	25.0 lbs (11.4 Kg)
Temperature	Operating: 0 to +40°C (+32 to +104°F) Storage: -20 to +50°C (-4 to +122°F)
Humidity	Operating: 20 – 85% RH Storage: 10 – 90 % RH
Mounting	300 mm x 100 mm VESA

STANDARD DISPLAY PART NUMBERS

- 90R0076** - 32" Radiance G2 without Single Fiber
- 90R0077** - 32" Radiance G2 with Single Fiber
- 90R0078** - 32" Radiance G2 (China) without Single Fiber

SUPPLIED/OPTIONAL ACCESSORIES

Supplied: Power Supply, AC Cord, Video Cables - S-Video, BNC, VGA, DVI, Product Documentation CD, Printed User Manual
 Optional: Easel Stand (26B0077), 30 ft. Power Extension Cable kit (90I0018)

COMPLIANCE & CERTIFICATIONS

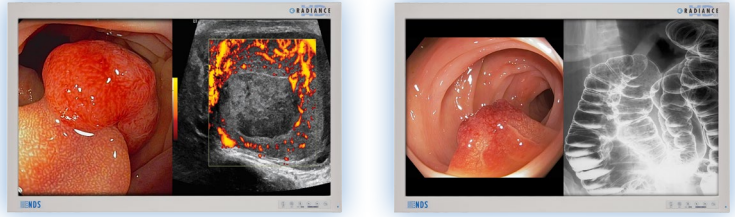
ANSI/AAMI ES60601-1, CAN/CSA C22.2 No. 60601-1, FCC Class B, EN60601-1, EN60601-1-2, CE, MDD 93/42/EEC, 2007/47/EC, RoHS, WEEE, Class I Medical Device, CCC (Pending).

USER CONTROLS - ON-SCREEN MENU

Quick Input Select, Primary / Secondary Input Select, MMI Window Size / Swap, CCT Setting, Brightness, Contrast, Hue, Saturation, Gamma, Sharpness, RGB Gain, Backlight Level, Horizontal & Vertical Position, Phase, Frequency, DPMS, Auto-Source Select, Scaling, Overscan, Five Programmable User / Modality Settings Profiles

VIDEO INPUT FORMATS

Format	Input (Digital)	Input (Analog)	Horizontal Freq (kHz)
576/50i (PAL)	SDI, DVI / Fiber	Comp. S-Video, RGBS, YP _b P _r	15.625
480/60i (NTSC)	SDI, DVI / Fiber	Comp. S-Video, RGBS, YP _b P _r	15.734
576/50p	DVI / Fiber	SOG, RGBS, YP _b P _r	31.250
480/60p	DVI / Fiber	SOG, RGBS, YP _b P _r	31.469
720/50p	HD-SDI, DVI / Fiber	HD-RGBS, HD-YP _b P _r	37.500
720/60p	HD-SDI, DVI / Fiber	HD-RGBS, HD-YP _b P _r	45.000
1080/50i	HD-SDI, DVI / Fiber	HD-RGBS, HD-YP _b P _r	28.125
1080/60i	HD-SDI, DVI / Fiber	HD-RGBS, HD-YP _b P _r	33.750
1080/50p	3G-SDI, DVI / Fiber	--	56.2
1080/60p	3G-SDI, DVI / Fiber	--	67.3

THE FIRST 32" SURGICAL DISPLAY WITH LED BACKLIGHT

INPUTS

DVI (1)	DVI-D
Single Fiber (Optional)	LC x 1
DVI (2)	DVI-I (2)
3G-SDI (1)	BNC, 75 Ω
3G-SDI (2)	BNC, 75 Ω
VGA	HD-15, or BNC x 5, or DVI-I (2), 0.7 Vp-p ± 6db, 75 Ω
SOG (1)	BNC, 75 Ω
SOG (2)	BNC, 75 Ω
HD-RGBS, RGBS	BNC x 5, or DVI-I (2), 0.7 Vp-p ± 6db, 75 Ω
HD-YP _b P _r , YP _b P _r	BNC x 5, or DVI-I (2), 0.7 Vp-p ± 6db, 75 Ω
S-Video	DIN-4, or BNC x 2, 0.7 Vp-p +6/-3db, 75 Ω
Composite	BNC, 0.7 Vp-p +6/-3db, 75 Ω

CONNECTIVITY
OUTPUTS

DVI (1)	DVI-D
3G-SDI (1)	BNC
HD-RGBS, RGBS	BNC x 5, or DVI-I (2)
HD-YP _b P _r / YP _b P _r	BNC x 5, or DVI-I (2)
S-Video	DIN-4

CONTROL INPUTS

Serial Remote	D-sub 9-pin, RS-232C
GPIO	RJH-4, TTL
ND-OS	Mini-USB

INPUT / OUTPUT CONNECTOR PANEL

MULTI-MODALITY INPUT COMBINATIONS

PRIMARY INPUT	SECONDARY INPUT									
	DVI1/Fiber	3G-SDI 1	DVI2	3G-SDI 2	YP _b P _r /SOG2	RGBS	Y/C	Comp.	SOG1	VGA
DVI 1/ Fiber	•	•	•	•	•	•	•	•	•	•
3G-SDI 1	•	•	•	•	•	•	•	•	•	•
DVI 2	•	•	•	•	N/A	N/A	•	•	•	•
3G-SDI 2	•	•	•	•	•	•	•	•	•	•
RGBS	•	•	N/A	•	•	•	•	•	•	•
YP _b P _r /SOG 2	•	•	N/A	•	•	•	•	•	•	•
Y/C	•	•	•	•	•	•	•	N/A	•	•
Comp.	•	•	•	•	•	•	N/A	•	•	•
SOG 1	•	•	•	•	•	•	•	•	•	N/A
VGA	•	•	•	•	•	•	•	•	N/A	•

Corporate Headquarters

5750 Hellyer Avenue
 San Jose, CA 95138 (USA)
 Tel: 408 776 0085
 Toll Free: 866 637 5237
 Email: info@ndssi.com

Europe

Nijverheidscentrum 28
 2761 JP Zevenhuizen (ZH)
 The Netherlands [EC REP]
 Tel: + 31 180 63 43 56
 Email: info-EMEA@ndssi.com

Asia Pacific

1F KDX Shiba-Daimon Bldg.,
 2-10-12 Shiba-Daimon, Minato-ku,
 Tokyo 105-0012, Japan
 Tel: +81 3 6402 9892
 Email: info@ndssi.jp