

IMAGE PERFORMANCE

LCD Panel	Active Matrix TFT with IPS, LED Backlight
Image Size (W x H)	20.4 x 12.8 inches (518 x 324 mm)
Viewing Area (Diagonal)	24 inches (611 mm)
Pixel Pitch	0.270 mm
Resolution (H x V)	1920 x 1200 (WUXGA), 16:10 Aspect Ratio
Luminance (No Touch)	300 cd/m ² (Typical), 250 cd/m ² (BT.709)
Color Calibration	NDS Color Correction Technology (CCT)
Contrast Ratio	1000:1 (Typical)
Color Gamut	BT.709 or SMPTE C
Viewing Angle	178° (Horizontal & Vertical)
Response Time	14 ms (Typical)

GENERAL

Input Power Requirements	24 Volts DC (22.5 Volts minimum)
Power Consumption	50 Watts (Typical)
Dimensions (W x H x D)	23.5 x 15.8 x 4 inches (597 x 401 x 100 mm)
Weight	15.7 lbs (7.1Kg)
Temperature	Operating: 0 to +40°C (+32 to +104°F) Storage: -20 to +50°C (-4 to +122°F)
Humidity	Operating: 20 – 85% RH Storage: 5 – 85% RH
Mounting	100 mm VESA

STANDARD DISPLAY PART NUMBERS

90R0063 - G2 24" w/o Fiber, **90R0064** - G2 24" w/ Single Fiber
90R0065 - G2 24" w/o Fiber w/ Touch, **90R0066** - G2 24" w/ Single Fiber w/ Touch

INCLUDED / OPTIONAL ACCESSORIES

Included: Power Supply, US and EU Power Cables, Video Cables - DVI, VGA, S-Video, 2 x BNC, Printed User Manual, Multi-Language CD
 Models With Touch Screen Also Include a Serial Cable & Touch Drivers CD
Optional: Display Stand (26B0078), Rear I/O Cover (90Z0115), 30 ft. Power Extension Cable kit (90I0017)

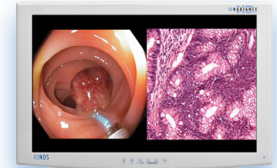
COMPLIANCE & CERTIFICATIONS ANSI/AAMI ES60601-1, CAN/CSA C22.2 No. 60601-1, Conflict Minerals, FCC Part 15, EN60601-1, EN60601-1-2, CE, MDD 93/42/EEC, 2007/47/EC, REACH, RoHS-2, WEEE, Class I Medical Device, CCC, IP 32

USER CONTROLS - ON-SCREEN MENU

Quick Input Select, Primary / Secondary Input Select, MMI Window Size / Swap, CCT Setting, Brightness, Contrast, Hue, Saturation, Gamma, Sharpness, RGB Gain, Backlight Level, Horizontal & Vertical Position, Phase, Frequency, DPMS, Auto-Source Select, Scaling, Overscan, Five Programmable User / Modality Settings Profiles

VIDEO INPUT FORMATS

Format	Input (Digital)	Input (Analog)	Horizontal Freq (kHz)
576/50i (PAL)	SDI, DVI / Fiber	Comp. S-Video, RGBS, YP _b P _r	15.625
480/60i (NTSC)	SDI, DVI / Fiber	Comp. S-Video, RGBS, YP _b P _r	15.734
576/50p	DVI / Fiber	SOG, RGBS, YP _b P _r	31.250
480/60p	DVI / Fiber	SOG, RGBS, YP _b P _r	31.469
720/50p	HD-SDI, DVI / Fiber	HD-RGBS, HD-YP _b P _r	37.500
720/60p	HD-SDI, DVI / Fiber	HD-RGBS, HD-YP _b P _r	45.000
1080/50i	HD-SDI, DVI / Fiber	HD-RGBS, HD-YP _b P _r	28.125
1080/60i	HD-SDI, DVI / Fiber	HD-RGBS, HD-YP _b P _r	33.750
1080/50p	3G-SDI, DVI / Fiber	--	56.2
1080/60p	3G-SDI, DVI / Fiber	--	67.3



INPUTS

DVI (1)
 Single Fiber
 DVI (2)
 3G-SDI (1)
 3G-SDI (2)

CONNECTIVITY

DVI-D
 LC x 1 (Optional)
 DVI-I (2)
 BNC, 75 Ω
 BNC, 75 Ω
 HD-15, or BNC x 5, or DVI-I (2), 0.7 Vp-p ± 6db, 75 Ω
 BNC, 75 Ω
 BNC, 75 Ω
 BNC x 5, or DVI-I (2), 0.7 Vp-p ± 6db, 75 Ω
 BNC x 5, or DVI-I (2), 0.7 Vp-p ± 6db, 75 Ω
 DIN-4, or BNC x 2, 0.7 Vp-p +6/-3db, 75 Ω
 BNC, 0.7 Vp-p +6/-3db, 75 Ω

OUTPUTS

DVI (1)
 3G-SDI (1)
 HD-RGBS, RGBS
 HD-YP_bP_r / YP_bP_r
 S-Video

DVI-D
 BNC
 BNC x 5, or DVI-I (2)
 BNC x 5, or DVI-I (2)
 DIN-4

CONTROL INPUTS

Serial Remote/Touch
 GPIO
 ND-OS

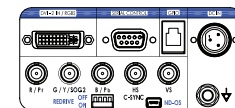
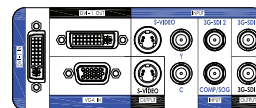
D-sub 9-pin, RS-232C
 RJH-4, TTL
 Mini-USB

TOUCH SCREEN (OPTIONAL)

Touch Screen Type
 Communication Interface

5-Wire, Resistive Type
 Serial, D-sub 9-pin

INPUT / OUTPUT CONNECTOR PANEL



Single-Fiber Input (Optional)

MULTI-MODALITY INPUT COMBINATIONS (FULL MMI)

PRIMARY INPUT	SECONDARY INPUT									
	DVI1/Fiber	3G-SDI 1	DVI2	3G-SDI 2	YP _b P _r /SOG2	RGBS	Y/C	Comp.	SOG1	VGA
DVI 1/ Fiber	•	•	•	•	•	•	•	•	•	•
3G-SDI 1	•	•	•	•	•	•	•	•	•	•
DVI 2	•	•	•	•	N/A	N/A	•	•	•	•
3G-SDI 2	•	•	•	•	•	•	•	•	•	•
RGBS	•	•	N/A	•	•	•	•	•	•	•
YP _b P _r /SOG 2	•	•	N/A	•	•	•	•	•	•	•
Y/C	•	•	•	•	•	•	•	N/A	•	•
Comp.	•	•	•	•	•	•	N/A	•	•	•
SOG 1	•	•	•	•	•	•	•	•	•	N/A
VGA	•	•	•	•	•	•	•	•	N/A	•