

IMAGE PERFORMANCE

LCD Panel	Active Matrix TFT with LED Backlight
Image Size (W x H)	27.4 x 15.4 inches (698 x 393 mm)
Viewing Area (Diagonal)	31.5 inches (800 mm)
Pixel Pitch	0.364 mm
Resolution (H x V)	1920 x 1080 (16:9 Aspect Ratio, Full HD)
Luminance	350 cd/m ² (Typical), 300 cd/m ² (BT.709)
Color Calibration	NDS Color Correction Technology (CCT)
Contrast Ratio (Typical)	3000:1 (Native, Not Dynamic)
Number of Colors	1.08 Billion Colors (10-Bit)
Color Gamut	BT.709 or SMPTE-C
Viewing Angle	178° (Horizontal & Vertical)
Response Time	8 ms (Typical)

GENERAL

Input Power Requirements	24 Volts DC (19.0 Volts Minimum)
Power Consumption	60 Watts (Max)
Dimensions	29.6 x 18.5 x 3.4 inches (751 x 470 x 86 mm)
Weight	25.0 lbs (11.4 Kg)
Temperature	Operating: 0 to +40°C (+32 to +104°F) Storage: -20 to +50°C (-4 to +122°F)
Humidity	Operating: 20 – 85% RH Storage: 10 – 90 % RH
Mounting	300 mm x 100 mm VESA

STANDARD DISPLAY PART NUMBERS

- 90R0076 - Radiance G2 32" without Single Fiber
- 90R0077 - Radiance G2 32" with Single Fiber
- 90R0078 - Radiance G2 32" (China) without Single Fiber

INCLUDED / OPTIONAL ACCESSORIES

- Included:** Power Supply, US and EU Power Cords, Video Cables: DVI, VGA, S-Video, 2 x BNC, Printed User Manual, Multi-Language CD
- Optional:** Easel Stand (26B0077), 30 ft. Power Extension Cable kit (90I0018)

COMPLIANCE & CERTIFICATIONS

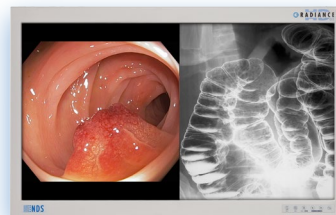
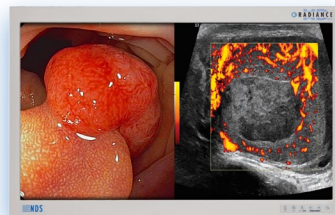
ANSI/AAMI ES60601-1, CAN/CSA C22.2 No. 60601-1, Conflict Minerals, FCC Class B, EN60601-1, EN60601-1-2, CE, MDD 93/42/EEC, 2007/47/EC, REACH, RoHS-2, WEEE, Class I Medical Device, CCC.

USER CONTROLS - ON-SCREEN MENU

Quick Input Select, Primary / Secondary Input Select, MMI Window Size / Swap, CCT Setting, Brightness, Contrast, Hue, Saturation, Gamma, Sharpness, RGB Gain, Backlight Level, Horizontal & Vertical Position, Phase, Frequency, DPMS, Auto-Source Select, Scaling, Overscan, Five Programmable User / Modality Settings Profiles

VIDEO INPUT FORMATS

Format	Input (Digital)	Input (Analog)	Horizontal Freq (kHz)
576/50i (PAL)	SDI, DVI / Fiber	Comp. S-Video, RGBS, YP _b P _r	15.625
480/60i (NTSC)	SDI, DVI / Fiber	Comp. S-Video, RGBS, YP _b P _r	15.734
576/50p	DVI / Fiber	SOG, RGBS, YP _b P _r	31.250
480/60p	DVI / Fiber	SOG, RGBS, YP _b P _r	31.469
720/50p	HD-SDI, DVI / Fiber	HD-RGBS, HD-YP _b P _r	37.500
720/60p	HD-SDI, DVI / Fiber	HD-RGBS, HD-YP _b P _r	45.000
1080/50i	HD-SDI, DVI / Fiber	HD-RGBS, HD-YP _b P _r	28.125
1080/60i	HD-SDI, DVI / Fiber	HD-RGBS, HD-YP _b P _r	33.750
1080/50p	3G-SDI, DVI / Fiber	--	56.2
1080/60p	3G-SDI, DVI / Fiber	--	67.3



INPUTS

DVI (1)	DVI-D
Single Fiber (Optional)	LC x 1
DVI (2)	DVI-I (2)
3G-SDI (1)	BNC, 75 Ω
3G-SDI (2)	BNC, 75 Ω
VGA	HD-15, or BNC x 5, or DVI-I (2), 0.7 Vp-p ± 6db, 75 Ω
SOG (1)	BNC, 75 Ω
SOG (2)	BNC, 75 Ω
HD-RGBS, RGBS	BNC x 5, or DVI-I (2), 0.7 Vp-p ± 6db, 75 Ω
HD-YP _b P _r , YP _b P _r	BNC x 5, or DVI-I (2), 0.7 Vp-p ± 6db, 75 Ω
S-Video	DIN-4, or BNC x 2, 0.7 Vp-p +6/-3db, 75 Ω
Composite	BNC, 0.7 Vp-p +6/-3db, 75 Ω

CONNECTIVITY

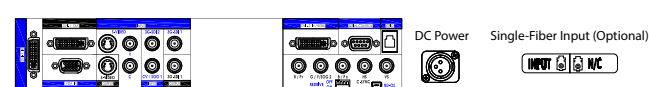
OUTPUTS

DVI (1)	DVI-D
3G-SDI (1)	BNC
HD-RGBS, RGBS	BNC x 5, or DVI-I (2)
HD-YP _b P _r / YP _b P _r	BNC x 5, or DVI-I (2)
S-Video	DIN-4

CONTROL INPUTS

Serial Remote	D-sub 9-pin, RS-232C
GPIO	RJH-4, TTL
ND-OS	Mini-USB

INPUT / OUTPUT CONNECTOR PANEL



MULTI-MODALITY INPUT COMBINATIONS

PRIMARY INPUT	SECONDARY INPUT									
	DVI1/Fiber	3G-SDI 1	DVI2	3G-SDI 2	YP _b P _r /SOG2	RGBS	Y/C	Comp.	SOG1	VGA
DVI 1/ Fiber	•	•	•	•	•	•	•	•	•	•
3G-SDI 1	•	•	•	•	•	•	•	•	•	•
DVI 2	•	•	•	•	N/A	N/A	•	•	•	•
3G-SDI 2	•	•	•	•	•	•	•	•	•	•
RGBS	•	•	N/A	•	•	•	•	•	•	•
YP _b P _r /SOG 2	•	•	N/A	•	•	•	•	•	•	•
Y/C	•	•	•	•	•	•	•	N/A	•	•
Comp.	•	•	•	•	•	•	•	•	•	•
SOG 1	•	•	•	•	•	•	•	•	•	N/A
VGA	•	•	•	•	•	•	•	•	N/A	•



9aTS^Headquarters

i i i z VeeZba_ ')' : WkVd3hW ES -aeW53 + #%% GE3 █ Ł # &* *) (" " * [Xa2' VeeZba_

Europe

@ahS fS 7gdbW9_ T: ? u' LZ' VdEfdSeeW53 *\$# \$BS WY 9Vd_ S k [EC] REP Ł &+ *+%#) ") # " [Xa2 ahS fSZYgdbW2` ahS fSza_

Asia PaciXc

@ahS fS -SbS 7Sef EcgSdWA_ ad (Zs Z#&? [S_ [a] EZ [SYSI S2]g Fa]ka #& Z' #% -SbS Ł *#%)' %S&(([Xa2' VeeZba_

A dW fS'? W]S 5W fVd Eg]fWS% \$! Fai Vd5 @aZl 9gS Y : gSDaSV 5ZSa KS Y 6]erdLr 4WY YI #"" * \$(5Z [S Ł * (# ' * ' +) * + [Xa2' VeeZba_ ZJ